



Workbench

Reception Counters

Workbench is a contemporary, yet classically simple design that can enhance any reception area. Its clean sharp lines can sympathetically encompass DDA friendly areas whilst providing a professional corporate image. Our 3 star timber lipped edges in either square or chamfered profiles can be specified in any combination with our selection of high quality sustainable veneers.

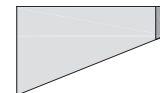
3 Star
38 or 30mm thick
banded timber lipping



Square 38

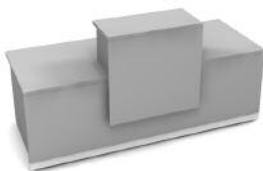
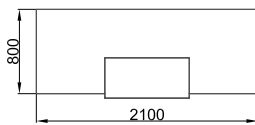


Square 30



Chamfer 30

Example layouts

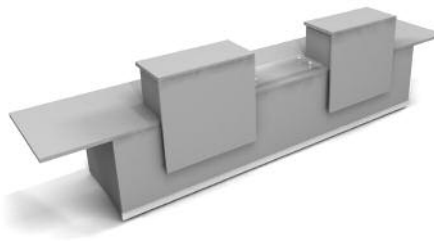
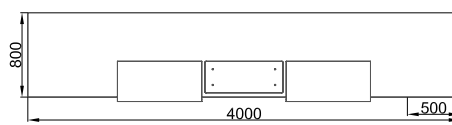


SIMPLE SINGLE

Consists of:

- 1 x W-900 2100mm straight counter
- 1 X W-902 800mm Hutch

RRP from £2212

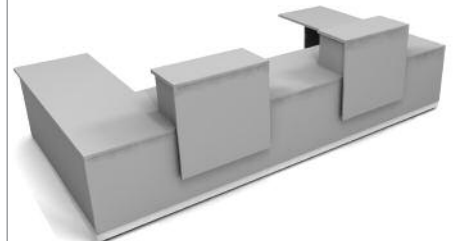
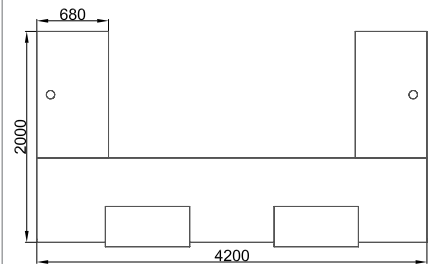


DOUBLE WITH DDA

Consists of:

- 1 x W-900 3000mm straight counter
- 2 X W-902 1000mm Hutches
- 1 X W-903 Glass Shelf
- 2 X W- 9010 DDA Overhangs

RRP from £3802



DOUBLE WITH RETURNS

Consists of:

- 2 x W-900 2100mm straight counters
- 2 X W-902 800mm Hutches
- 2 X W-908 1200mm Desk returns

RRP from £6316

Cable Management - See page T8 - Handling IT

Pedestals & Storage - Please see all options within the "Storage section" - Page S1-S10