

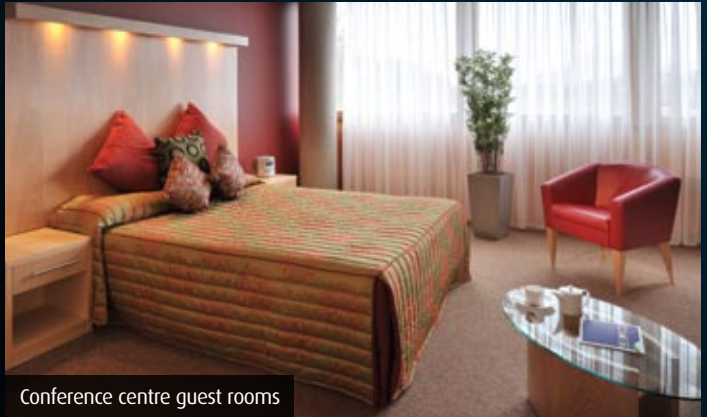
NCSL | Case Study



Lounge area



Bespoke dining



Conference centre guest rooms

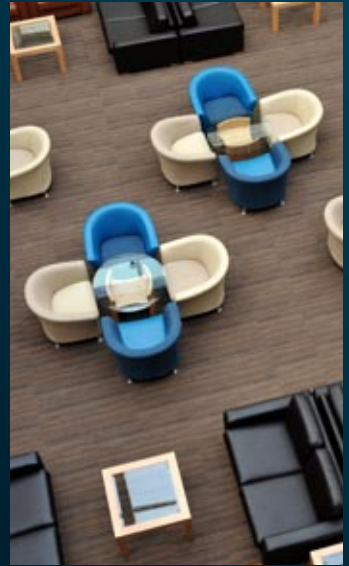
NCSL | Case Study

HANDS have a long tradition in designing and making high quality furniture for the hotel and hospitality industry.

This case study focuses on the National College of School Leadership, a prestigious residential conference centre, used for strategic educational development by the leaders of schools and colleges. As within many hotels and conference centres, the facilities at the NCSL are also hired out to private clients, so the furniture had to be durable, of a high standard and very flexible.

Beautifully veneered and hand finished headboards, bedside cabinets, desks and sumptuous, practical guest chairs were installed into the 76 guest bedrooms. The impressive quality is evident for all to see and a true credit to the cabinet and chair making skills resident in the Hands workshops at Wycombe.

The dining and lounge areas are a focal point within the centre, providing a more relaxed discussion environment for the delegates and special guests. HANDS have designed and manufactured both flexible tabling and tailored seating using a combination of Jive Club Chairs, Libra sofas and coffee tables in an informal, yet business like setting, to meet these exact needs.



Hands of Wycombe
36 Dashwood Avenue
High Wycombe, Bucks HP123DX
T: 01494 524 222

Hands London Showspace
26-27 Great Sutton Street
Clerkenwell, London EC1V 0DS
T: 020 7490 5722

www.hands.co.uk
info@hands.co.uk

HANDS