

Handling IT



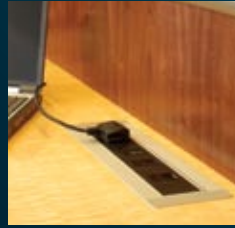
HANDS

# Features

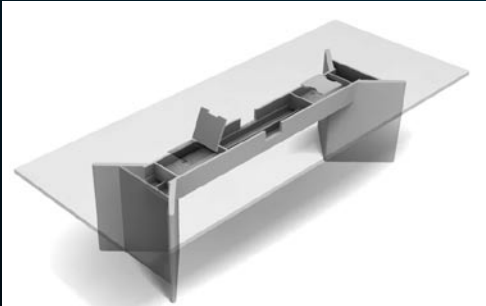
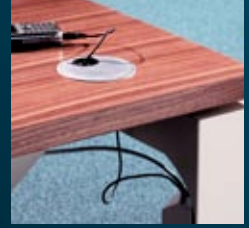
235 Access hatch



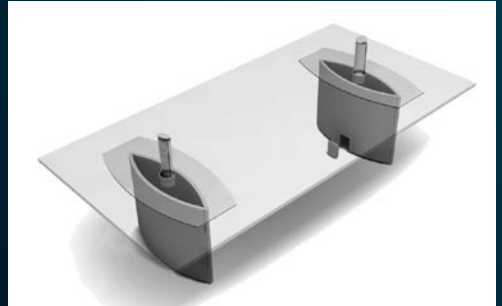
242 Roll Over Power / Data block closed & open



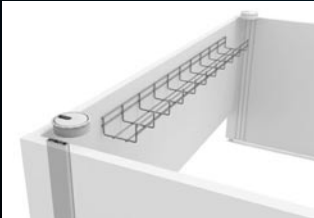
229 Steel cable port and cover



Arrowhead bases with a 233 end panel demonstrating a 237 veneered trough running between bases with a 235 hinged veneered cable access flap



Wing bases demonstrating evoline pop-up for power and data and cover access panel for wing base

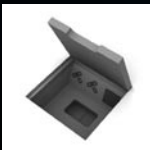


Underdesk cable wire basket with wooden cable port



Cable wire basket with vertical cable spine

HANDS offer a wide range of solutions to incorporate IT and AV equipment into our high quality made furniture.



Hinged veneered cable access flap



Lift out access lid to box trough



Cable ports available in wood, silver or black



Angled IT Block for Power, Data and AV connections



Vertical cable riser for Verdi tables



Evoline power/data access

Hands of Wycombe  
36 Dashwood Avenue  
High Wycombe, Bucks HP123DX  
T: 01494 524 222

Hands London Showspace  
26-27 Great Sutton Street  
Clerkenwell, London EC1V 0DS  
T: 020 7490 5722

[info@hands.co.uk](mailto:info@hands.co.uk)  
[www.hands.co.uk](http://www.hands.co.uk)

**HANDS**